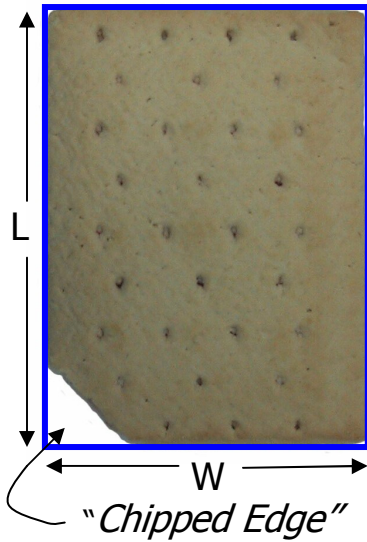


MONTROSE TECHNOLOGIES INC.

Non-Frosted Toaster Treat Measurement Summary



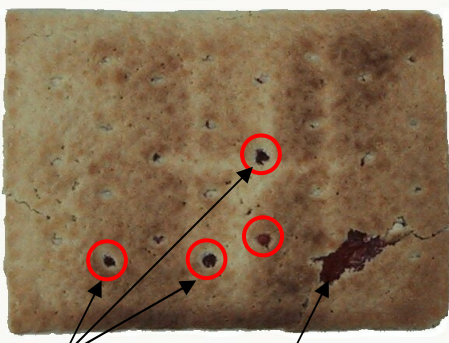
Size (2D) Defects

Incorrect Length (mm): The long side of a minimum bounding rectangle (shown in blue).

Incorrect Width (mm): The short side of a minimum bounding rectangle (shown in blue).

Broken: The incorrect length or width when the product is broken fully across the product.

Chipped Edge → Total Bite Area (mm²): The area missing along the product perimeter, within a minimum bounding rectangle.



Color Defects

Leaker → Color Blob (mm²): The area covered by deposit colored blobs, while excluding wicking area.

Wick Count → Color Blob (count): The number of small blobs (circled in red) that match the color of the deposit.

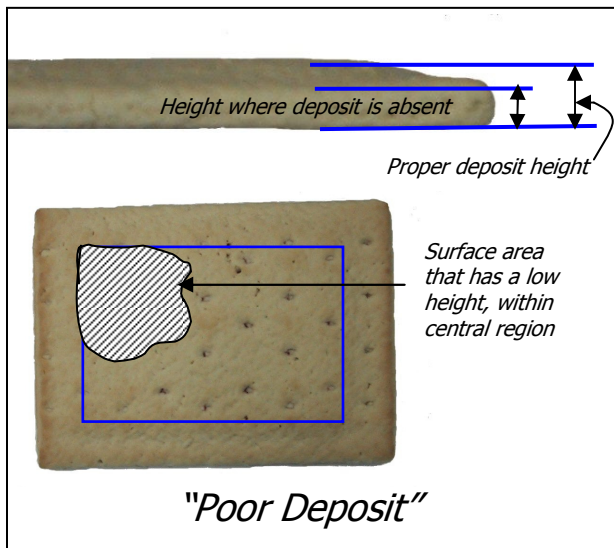
Crust Color → Average Color Above (dbu): Average Color of all crust pixels, while excluding deposit.

"Wicking" "Leaker"

Height (3D) Defects

Warped or Incorrect Height → Peak Height (mm): Average of the 50 highest points anywhere on the top surface.

Poor Deposit → Height Blob (mm²): The total surface area that has a contiguous low height (absent deposit), within the central region.

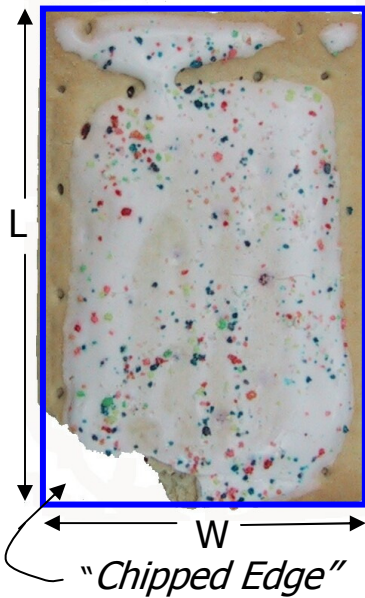


"Poor Deposit"



"Warped"

Frosted Toaster Treat Measurement Summary



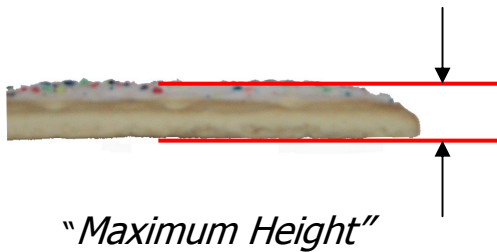
Size (2D) Defects

Incorrect Length (mm): The long side of a minimum bounding rectangle (shown in blue).

Incorrect Width (mm): The short side of a minimum bounding rectangle (shown in blue).

Broken: The incorrect length or width when the product is broken fully across the product.

Chipped Edge → Total Bite Area (mm²): The area missing along the product perimeter, within a minimum bounding rectangle.



Height (3D) Defects

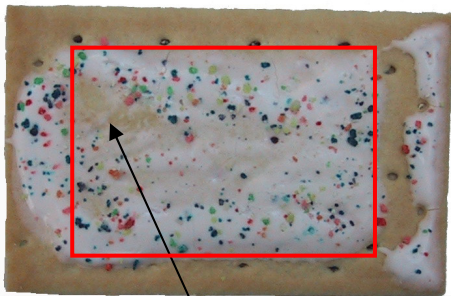
Incorrect Height or Warped → Peak Height (mm): Average of the 50 highest points anywhere on the top surface.

Color Defects

Frost Coverage % → % Area Above Inside (%): The surface area percentage inside the central region covered by light colored frosting.

Leaker → Area Below (mm²): The area covered by dark colored pixels.

Crust Color → Average Color Below Outside (dbu): Average Color of all crust pixels outside of the central region, while excluding the frosting.



"Poor Frost Coverage"



"Leaker"