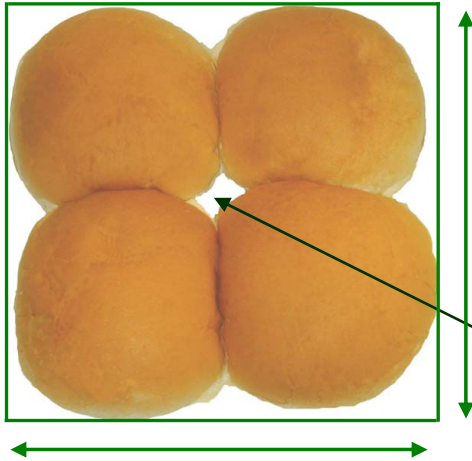


# MONTROSE TECHNOLOGIES INC.

## CLUSTER BUN MEASUREMENT

### Top Measurements



**Width:** The width of the smallest rectangle that completely encloses the cluster bun. The width measurement is not affected by the orientation of the product on the conveyor belt.

**Length:** The length of the smallest rectangle that completely encloses the cluster bun. The length measurement is not affected by the orientation of the product on the conveyor belt.

**Peak Height:** Height of the highest point on the cluster bun surface.

**Volume:** Volume of the cluster bun. If weights are obtained from an external scale, cluster bun density can be calculated from volume and weight.

**Hole Area:** Area of the central hole.

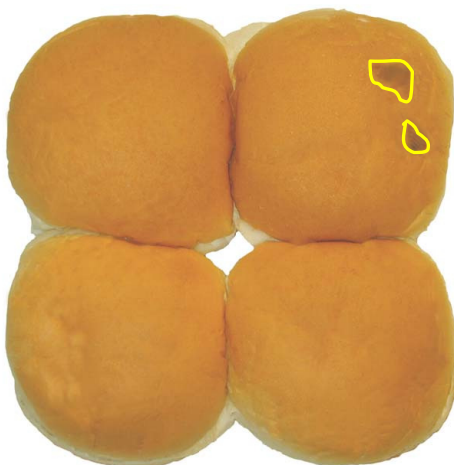


### Color Measurements

**Average Color:** The bake average color of the entire top of the cluster bun, excluding the hole. A higher number means a lighter color.

**Dark Area %:** The percentage of the top covered by areas darker than a customer specified threshold. (e.g. burnt area)

**Unseeded crown color:** The average bake color of the crown surface, not covered by seeds, flour, or other light areas.



### External Devices

**Average Weight:** Average weight of a sample of customer specified number of bun clusters, read from an optional scale.